



IMAGINE . DESIGN . INSPIRE™



who we are

D'trax Design & MEG Design Consultants recent merger brings about extensive experience in Interior-architecture in countries such as China, Hong Kong, Malaysia, Taiwan, Thailand and Vietnam. With this new synergy, we are pleased to offer interior-architecture as part of our design services.

our goal

To meet the requirements, challenges and the end-result to create Designs that Traces Rough sketches into Achievable designs Xpressions. Therefore, it is crucial that design is carried out through a well thought process in Understanding the client's Business Operations, Work Culture, Structure and Environment. This coupled with a clear knowledge of the client's objectives. As we are fervent in what we do and constantly endeavor to surpass and deliver the expectations of clients. We anticipate any opportunity in working with you for your future Interiors. We are committed in making each of the project a success and develop a long term partnership with our clients.

mission & services

D'trax operates as a full-fledged interior design firm that supports your requirements in through the following design services:



Project & Site Evaluation



Design & Planning



Interior Architecture



Preliminary Budgets, Estimates & Feasibility Studies



Contract Document & Specifications Preparation



Contract Administration



Furniture Fittings, Office Fit-outs & Equipment Supplies



Full Turn-key Solutions



Move Management



Project Management

Make Dtrax your one-stop Interior Design consultancy.

Imagine - create design concepts fitting to each project

Design - concepts that is ingenious, original, functional & timeless

Inspire - every project that we undertake in our wings.



Conceptual Design Community Space



Conceptual Design – Community Space



IMAGINE . DESIGN . INSPIRE™

Conceptual Design Community Space

IMAGINE . D E S I G N . I N S P I R E ™



Conceptual Design – Enclave Space



IMAGINE . DESIGN . INSPIRE™

Conceptual Design – Enclave Space



IMAGINE · DESIGN · INSPIRE™

Conceptual Design Enclave Space



Conceptual Design Collaborative Work Space



IMAGINE . DESIGN . INSPIRE™

d|trox

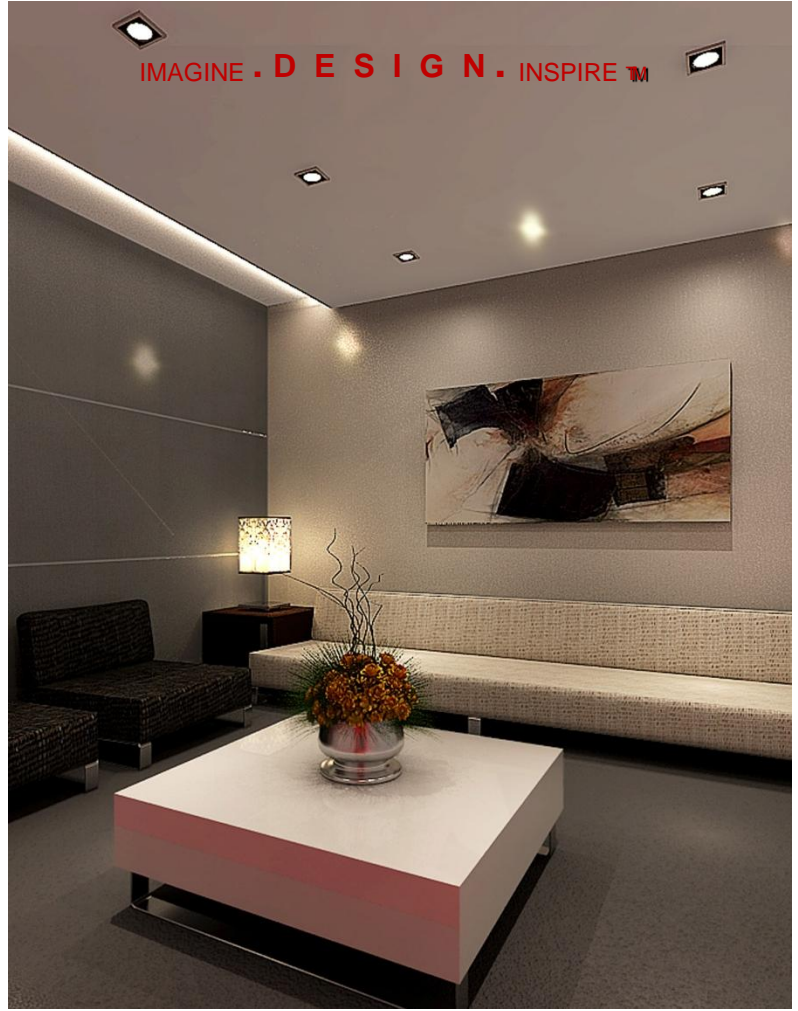
Conceptual Design Collaborative Work Space



IMAGINE . DESIGN . INSPIRE™

d'trax

Conceptual Design Collaborative Work Space



Conceptual Design – Team Meeting Space



IMAGINE . DESIGN . INSPIRE™

Conceptual Design – Team Meeting Space



Conceptual Design – Team Meeting Space

our project experiences

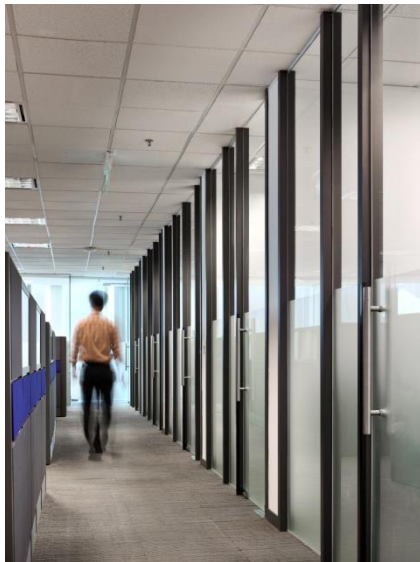


Client : GKN Driveline Pte Ltd
Services : Manufacturer – Automotive
Driveline Components
Address : 10 Eunos Road 8 #13-05
Singapore Post Centre Singapore 408600
Size : 8,500sqft

GKN Driveline Pte Ltd,

An automotive driveline components company has acquired a Office Space of 8,500sqft in 2009. Periodically since then, D'trax has been contracted to carry out several minor Alteration & Addition works.

The recent GKN acquired office space for expansions introduces the usage of Aluminum Single Glass Doors - frame profile of 45mm. Not only is there integration with the existing office fit out , it adds uniformity to the overall fit-out space of office.





Client : Muru'D Singapore

Services : latest start up accelerator under Telstra
Software group

Address : 112-115 Amoy Street Singapore 0685811

Size : 4,000sqft



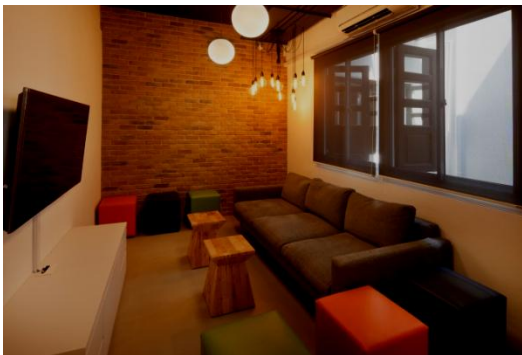
“Opening up the interior” – MURU-D

Muru-D, “Path to digital” is the latest startup accelerator under Telstra Software group choosing to strategically establish itself in a renewed old shop house located near Singapore’s CBD which is influenced by the urban renewal developments over the last few decades. An open invitation to corporate partners and young startups, the priority in the design is “opening up the interior” with the domestic feel of the structure being preserved.

The design of the premise is characterized by its lightness and respect for its surroundings. In the common areas, such as town hall and work area, continuous space predominates. The details and finishes utilize conventional materials scrubbed concrete, whitewash of existing walls to translate into more contemporary language.

The warm, welcoming atmosphere at the pantry is a light and clean space where local wood of the tables stand out against the rest of the concrete floor, white walls, grey ceiling and lamps.

The result, an overall feeling of sparseness has been created, while preserves the original structure, yet exudes a decidedly contemporary ambience.





Client : Multivac Pte Limited.

Services : Integrated Packaging Solutions

Address : 31 International Business Park
#01-12A Creative Resource Centre
Singapore 609921

Size : 4,000sqft German sale & marketing facility

MULTIVAC Pte. Ltd. This German sale & marketing facility for innovative packaging solution inhabits a 4,000sqft space in Creative centre. D'trax was charged with designing a dynamic work environment for the Asia Pacific Office

Designed in line with Multivac's strict color palette, the scheme of the wall and ceiling range from white to grey in harmony with the glass walls of the façade, adding a tint of timber shade on the vinyl raised floor at the lounge area.

The completed interiors; a straight interior concept that harmonized the lighting and highly functional office layout that support the crispness and integrity of this facility.





 **TravelClick**

Client : TravelClick Pte Limited.
**Services : Provider of hospitality industry revenue
generating solutions**
**Address : 8 Kallang Avenue,
#12-05, APERIA
Singapore 339509**
Size : 4,000sqft



TravelClick sited a new office at Aperia tower of approximately 4000sqft of space. The design and completion of the interiors comes with a palette of colours for walls ranging from white and green in the training room to deep blue in the lighted “tunnel” creating a visually and physically appealing effect.

A straight interior design concept results in harmonized lighting and a uniform functional office for this global provider of revenue generating solutions for hoteliers across the globe.





Client : (VitaCoco) All Market Singapore Private Ltd

Services : Consumer Goods

Address : 61 Science Park 2 @ THE GALEN

Size : 6,000sqft



Vitacoco's strategy of growing its presence and business in Asia preferred Singapore as the first office in Asia. 61 Science Park 2, #02-03/04 THE GALEN, 6,000sqft American Lab Facility. This was a joint collaboration project, in partnering with a Lab Expert Company - Advance Lab to create a Basic Testing Lab. To top it the entire design and build of the facility was scheduled to complete in 6 weeks.

D'trax took up the challenged, in being attentive to Vita Coco's working processes, design details and protocols, and working alongside with Advance Lab, we delivered to the design concepts presented at the initial meeting. Design concept was open plan - with the aid of large window on one side allows abundance of natural light to shine in, walls and exposed 6mm high ceiling joists were painted in white to add to the sense of height. A certain fraction of the parameter walls in the facility was painted VitaCoco's corporate green to that denotes the company business to nutrients.





Client : J. Lauritzen Singapore Pte. Ltd.

Services : Ocean transport solutions.

Address : 1 Harbourfront Avenue #16-08
Keppel Bay Tower
Singapore 098632

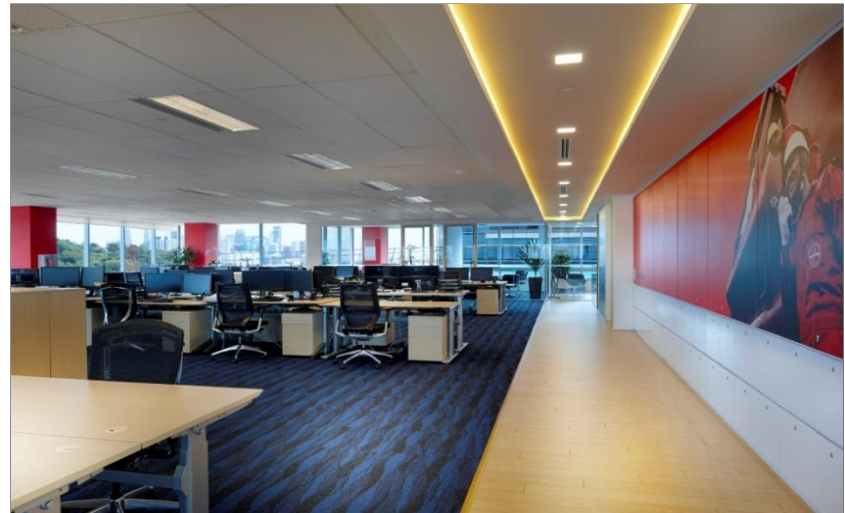
Size : 6,000sqft

J. Lauritzen Singapore Pte. Ltd. - Danish shipping company with world-wide operations relocated from the existing office to 6,000sqft Office Fit-out in another level of 1 HarbourFront Avenue, Keppel Bay Tower.

The largest office in compared to their overseas offices. The reception space is the key focus with a Graphic Wall depicting the visual of a vessel, in the middle of the deep blue sea.

The Deep Blue Sea concept was carried out all throughout the unit. Main workspaces were demarcated by using a dark blue color carpet to simulate the flow of the sea. The wooden grain vinyl denotes the deck on board the vessel. All columns were painted in fiery red color to create a uniformity feel.

Operation Workspaces where each cluster is luxurious apart by 2.4m instead of the standard 1.8m, complete with height adjustable accessibilities. The Executive Room is situated facing Mount Faber Park, an oldest Park of Singapore. And periodically one gets a glimpse of the Cable Car whisking by.





Client : SMU Shop cum Information Centre
Services : University
Address : Level 1, Li Ka Shing Library
Size : 1,800sqft

SMU Management, requirements were to have a Retail that is audacious in vibrancy and exuberance where the Students can interact more. Synthetic Grass carpets were laid over existing black granite flooring, where it creates a make shift lawn that replicates an outdoor sense. Existing cabinets were laminated in minimalist white color to illuminate and create a welcoming atmospheres.

Mocked skate platforms were integrate onto an island display rack. Display racks were laminated in bright yellow color with illuminated by installing several numbers of LED lights and placed at right angle. Thus drawing the attention and curiosity of passerby.





our clients references

A

ATMD Bird & Bird LLP
Austen Maritime Services
AZBIL Singapore Pte Ltd
AXIS Offshore (Singapore)
AMCOR Singapore Pte Ltd
Assets Training & Technical Services Pte Ltd
Alcatel-Lucent (Singapore)
Arcadia Energy (Singapore)
AEW Asia
Astique Medical

B

Bakrie Petroleum International Pte Ltd
Brother International Singapore Pte Ltd
BeXcom Pte Ltd
Bibby Ship Management Singapore Pte Ltd
Bibby Financial Services Singapore Pte Ltd
Bystronic Pte Ltd
BESAFE Consultants Pte Ltd

C

Coca Cola Far East Pte Ltd
CPM Consulting Pte Ltd
City Developments Pte Ltd
Cardo Group Asia Pacific Pte Ltd
CDL Recreation Centre
CEO Suite (Singapore)
City Service Office (Bangkok)

D

DSO National Laboratories

E

Edelman (Singapore)
Economic Development Board

F

Fig & Olive Restaurant
Farstad Shipping Pte Ltd
Farington Investment Pte Ltd
FoodFare (Marina Bay Financial Centre)
FoodFare (Choa Chu Kang - Junction 10)

G

Gleneagles Hospital (Singapore)
Goehe-Institut (Singapore)
Global Energy Resources (Singapore)
Goodrich Global Ltd (Hongkong)
GKN Driveline (Singapore)
Griha Pte Limited

H

HarbourFront One Pte Ltd
HeidelbergCement Asia Pte Ltd
HDFC (Singapore)
Hillhouse Capital Advisor Pte Ltd
Huntsman (Asia Pacific) Pte Ltd
Hong Property Investments Pte Ltd
HRnet One K.K. (Tokyo, Japan)
HRnet One (Taiwan) Pte Ltd
HireRight Pte Ltd

I

Inmarsat (Singapore)

J

J. Lauritzen Singapore Pte Ltd
Jasper Drilling Pte Ltd

K

Keppel Infrastructure Holdings Pte Ltd

L

Liberty Commodities Asia Pte Ltd
Lincoln Electric Co (Asia Pacific) Pte Ltd
Lockton Companies (Singapore) Pte Ltd
Leco Motor Pte Ltd
Leco Automobile

M

MediaTek Singapore Pte. Ltd
Melaleuca SEA Singapore Pte Ltd
Multivac Pte Ltd
MF Global Singapore Pte Ltd
Micron Semi Conductor Asia Pte Ltd
Muru-D (Singapore)

O

Orange-field Management Services Pte Ltd
Ooyala Singapore
Odyssey Financial Technologies

P

PIAB Asia Pte Ltd
Palm Bay Resort (Hangzhou, PR China)
Peoplesearch (Singapore)
Peoplesearch (Hong Kong)
Peoplesearch (Taipei 101, Taiwan)
Peoplesearch (Tokyo, Japan)

Q

QSS Safety Products Singapore Pte Ltd

R

Rajah & Tan LLP
RHB Banking Sdn Bhd
RKR Capital
Ruth Couture

S

SEACO Asia Pte Ltd
Simmons (SEA) Pte Ltd
Singapore Oxygen Air Liquide Pte Ltd
ST Microelectronics APAC
Singapore Tourism Board
Singapore Management University
Sumitomo Chemical (Asia Pacific) Pte Ltd
SAE Energy International
ST Aerospace Engines (Singapore)
Starcap Café (Singapore)
Starhub (Singapore)

T

TYCO International Asia Inc
TAFEP
Travel Click Singapore Pte Ltd
TELSTRA Singapore
The Northern Trust Company (Singapore)
The Talent Business (Singapore)
Tian Long Property (Chongqin, PR China)

V

VitaCoco (Singapore)

W

Winsland Investment Pte Ltd
Wintrust APAC Pte Ltd
Watson Wyatt Singapore

Y

YAZAKI Global Purchasing Singapore Pte Ltd (YGP)

Z

Zurich Risk Services Asia Pacific

testimonials

“The design team is very professional and able to make changes to suit our requirements. They are very patient and have place **the client requirements as their top priority.**” – Ms. Genevieve Won, Operation Director, ATTS, December 2013

“The Team did very well in **integrating our brand image** and **corporate values in the office design.** **Attention to details in all aspects of the design,** starting from the style of the cabinets to the selection of the fittings was truly remarkable. We look forward to working with you again when we decide to expand our operations in the near future” – Director, (VitaCoCo) All Market Singapore, September 2013

“D'trax team has been very warm to every single touch-points of the Amcor team, and have contributed to other aspects of the project with thoughtfulness, such as the presentation of green plants, etc. These couple of situation whereby separate requests were made by Amcor colleague for some touch-ups on existing structures/works which is outside D'trax scope but their willingness to make the **totality of service experience is commendable**”
– Mr. Chang Seng Wu, chief Procurement Officer, Amcor Flexibles APAC. March 2014

“Contracted D'trax to carry out Renovation Works at APERIA was **a brilliant choice,** though they are not the cheapest option, but at the end, the value and expertise they bring to the table weighs much more than the saving of a few bucks in the bank.” – Mr. Maverick Mak, Regional Vice President, TravelClick. April 2015

“The alteration and addition works face-lift integrated with the existing contemporary design. The team carried out the works in a professional and **efficient manner** and to an **excellent quality of workmanship.** They have demonstrated that they are more than capable of constructing a project of this size to an exceptional standard and we will be considering them for future fit-out projects.” – Mr. Phillip Seah, Manager - Information Technology (IT), YAZAKI Global Purchasing Singapore Pte Ltd . March 2015

“**Excellent** - Will be my choice of using one word to describe my experience engaging and working with D'trax for our office renovation. Everyone who has gone through the experience on renovation work knows that it is not an easy easy task, being the amount of time and energy involved in getting the arduous job done within a short time frame. Especially when many small details could have possibly been missed out or even misinterpreted during the process, but D'trax has proven that this need not be the case with the **capable team.**” – Mr. David Lum, Managing Director, Multivac Pte Limited. May 2015



IMAGINE . D E S I G N . INSPIRE ™

We are a full-service office interior design firm specializing in various fields of office interior designs. We offer inspiring and realistic interiors design to motivate Consumer desires and ultimately drive sales.

The design teams have direct access to a wide range of mid to high-end design trends and ideas. This thorough understanding of the Consumer's needs and desires is critical to all in-house design disciplines and projects, this is what sets Dtrax apart.

As a Company, we are passionate in our services and constantly endeavor to surpass and deliver the expectations of clients. We anticipate an opportunity in working with you, for your future Corporate Interiors. This consents us to create more amazing interiors together.

D'trax Design Pte Ltd Address: 51 Anson Road #08-51 Singapore 079904

Contact : **Ronald Goh**

T: (65) 6224 9242 M: (65) 9001 1149

E: ronald@dtrax.com.sg W: www.dtrax.com.sg